

Non-Io-A.

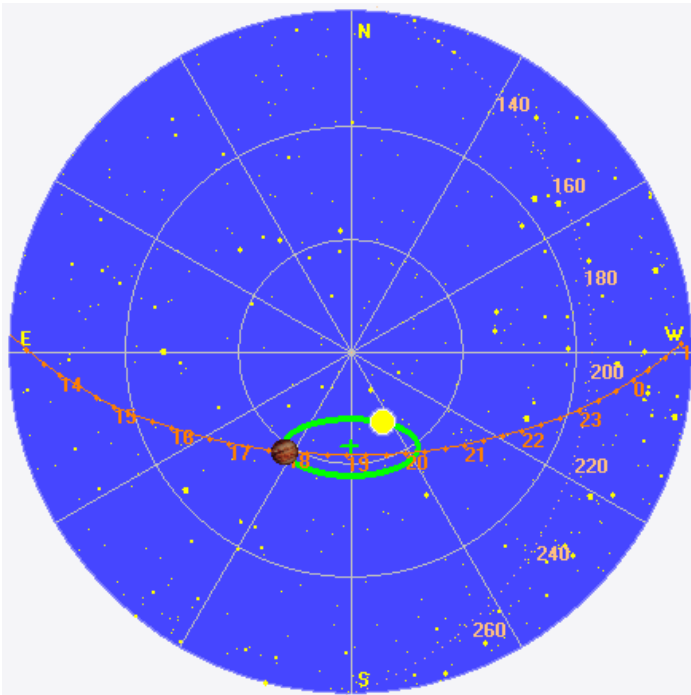
Some surprisingly well-defined vertex late arcs and deep ionospheric scintillation in some non-Io-A.

RCP dominant L bursting 1736–1822 UTC from 16 to 24 MHz, vertex late arcs.

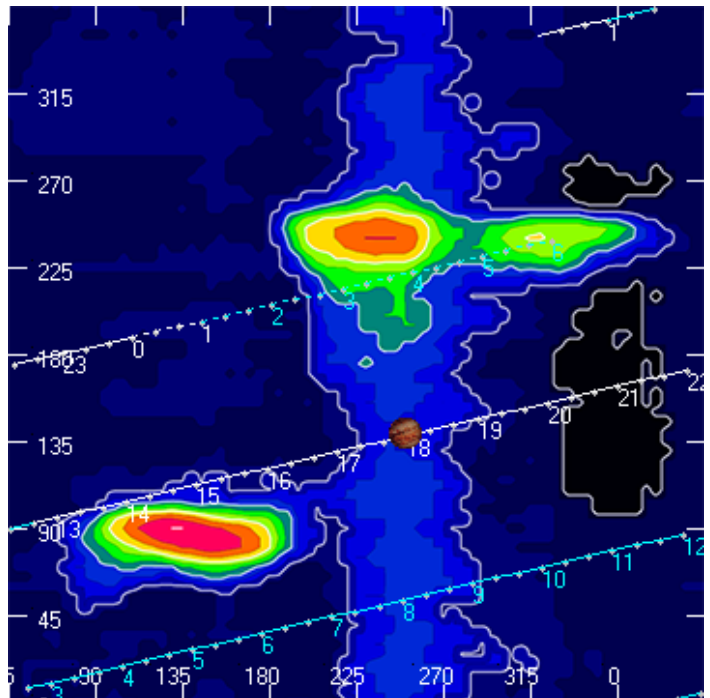
Jupiter was -23° to -12° off axis.

Jupiter was trailing the Sun by 25° .

Jupiter's location at midpoint of observed emission (1759 UTC)

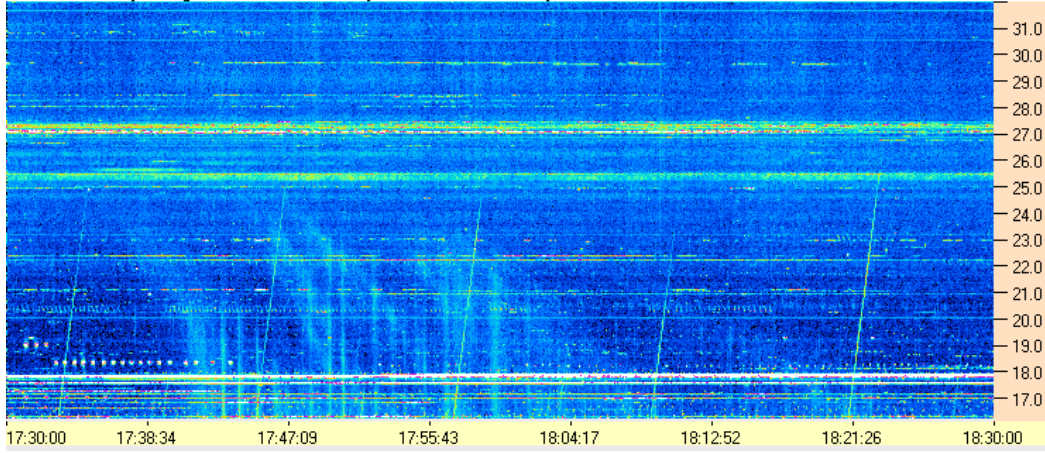


Sky map with array HPBW in green.

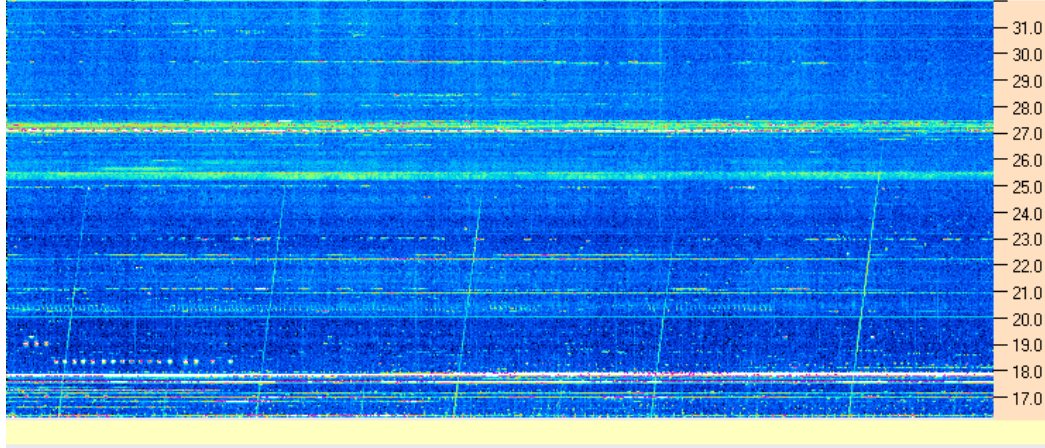


CML-Io phase plane.

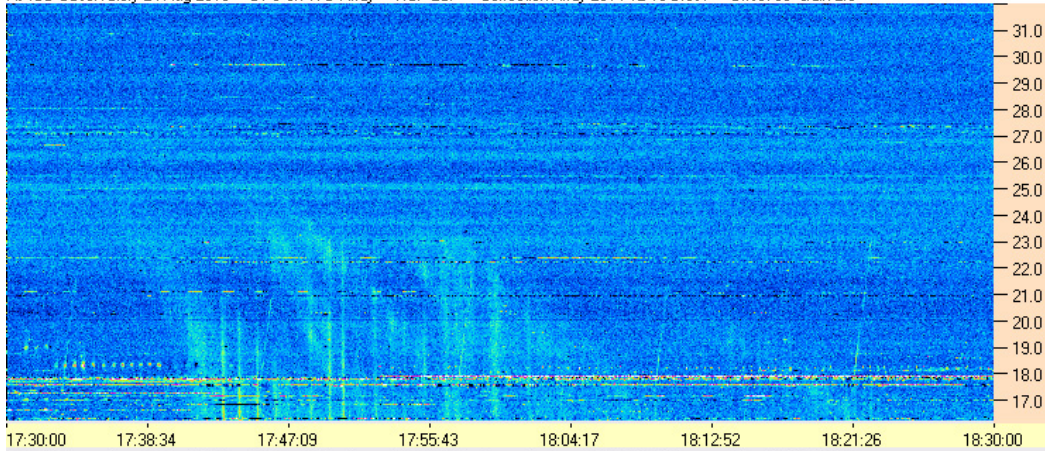
AJ4CO Observatory 24 Aug 2016 - DPS on TFD Array - RCP - Correction Array 2014 12 18 B.csv - Offset 2050 Gain 5.0



AJ4CO Observatory 24 Aug 2016 - DPS on TFD Array - LCP - Correction Array 2014 12 18 B.csv - Offset 2050 Gain 5.0



AJ4CO Observatory 24 Aug 2016 - DPS on TFD Array - RCP-LCP - Correction Array 2014 12 18 B.csv - Offset 50 Gain 2.0



AJ4CO Observatory 24 Aug 2016 - DPS on TFD Array - LCP-RCP - Correction Array 2014 12 18 B.csv - Offset 50 Gain 2.0

