

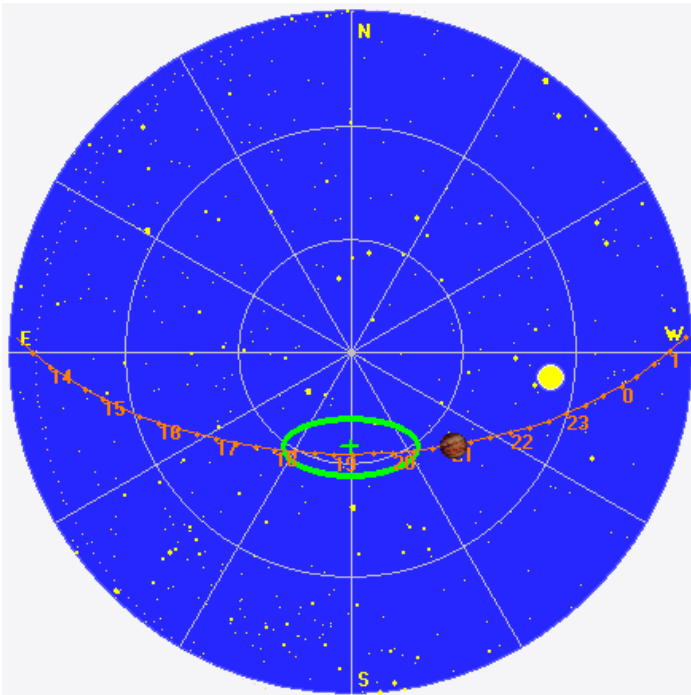
Io-B.

RCP dominant N events (four, each very brief) 2028–2133 UTC from 21 to 23 MHz, zero frequency drift emission envelopes.

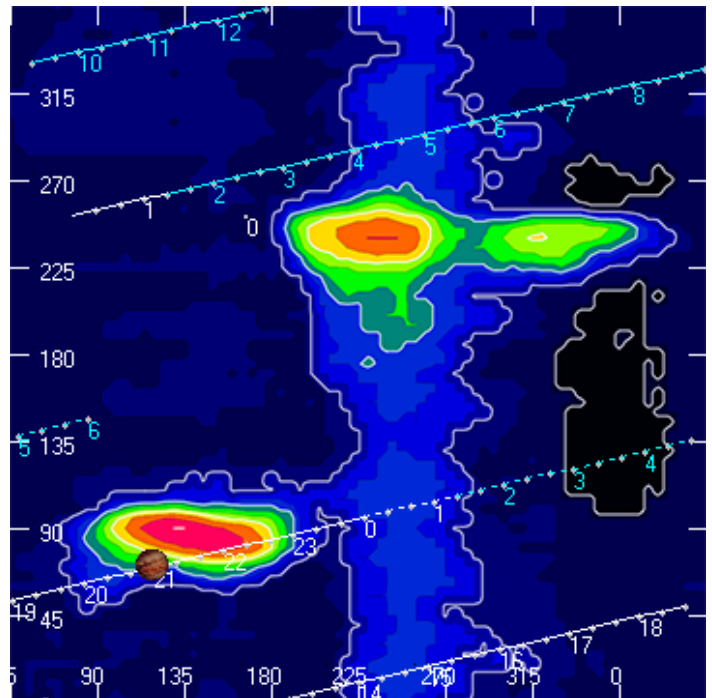
Jupiter was $+17^\circ$ to $+33^\circ$ off axis.

Jupiter was trailing the Sun by 28° .

Jupiter's location at midpoint of observed emission (2100 UTC)

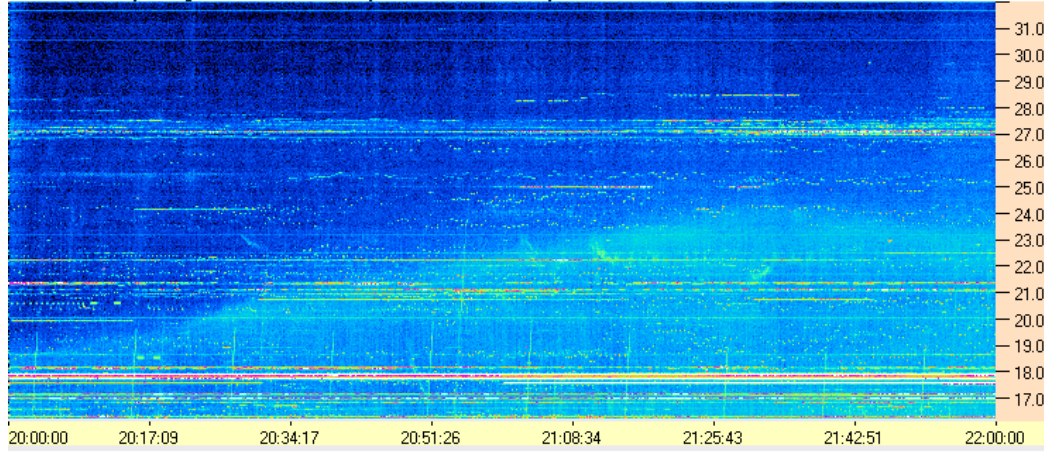


Sky map with array HPBW in green.

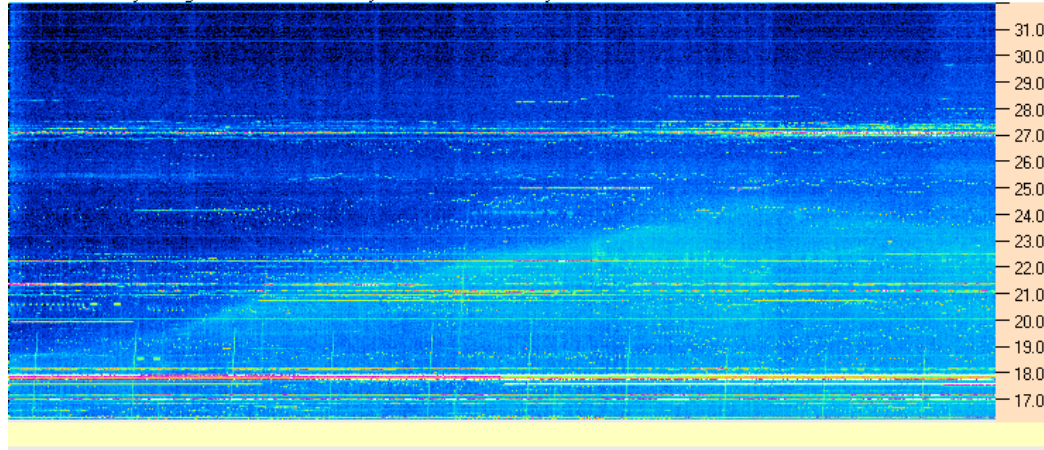


CML-Io phase plane.

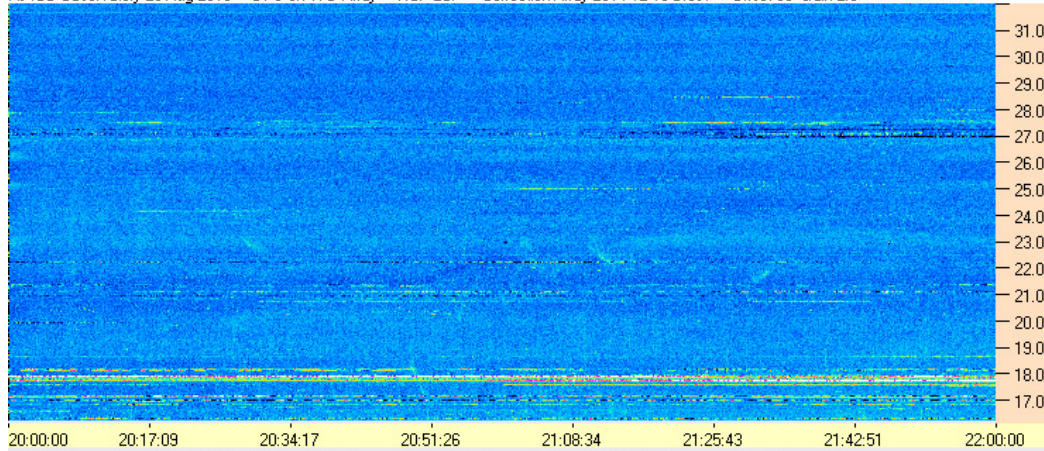
AJ4CO Observatory 20 Aug 2016 - DPS on TFD Array - RCP - Correction Array 2014 12 18 B.csv - Offset 2100 Gain 5.0



AJ4CO Observatory 20 Aug 2016 - DPS on TFD Array - LCP - Correction Array 2014 12 18 B.csv - Offset 2100 Gain 5.0



AJ4CO Observatory 20 Aug 2016 - DPS on TFD Array - RCP-LCP - Correction Array 2014 12 18 B.csv - Offset 50 Gain 2.0



AJ4CO Observatory 20 Aug 2016 - DPS on TFD Array - LCP-RCP - Correction Array 2014 12 18 B.csv - Offset 50 Gain 2.0

