

Adding to Tom, Dave, and Nathan’s nice reports, here’s some weak Io-B and weaker Io-D.

Some brief S bursting, gross timing correlates well with Nathan’s high speed spectrograms.

Brief bout of line noise circa 2035 UTC.

Io-D showed its sometimes-characteristic double hump.

RCP dominant L bursting 1919–2146 from 16 to 31 MHz, vertex early arcs. (Io-B)

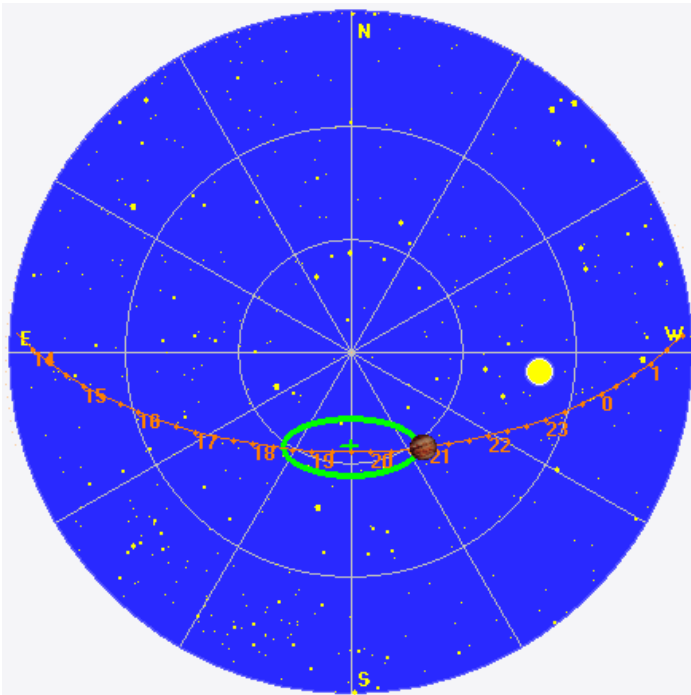
RCP dominant S bursting 2041–2054 from 22 to 24 MHz, zero frequency drift emission envelope. (Io-B)

LCP dominant L bursting 1953–2225 UTC from 16 to 23 MHz, vertex early arcs. (Io-D)

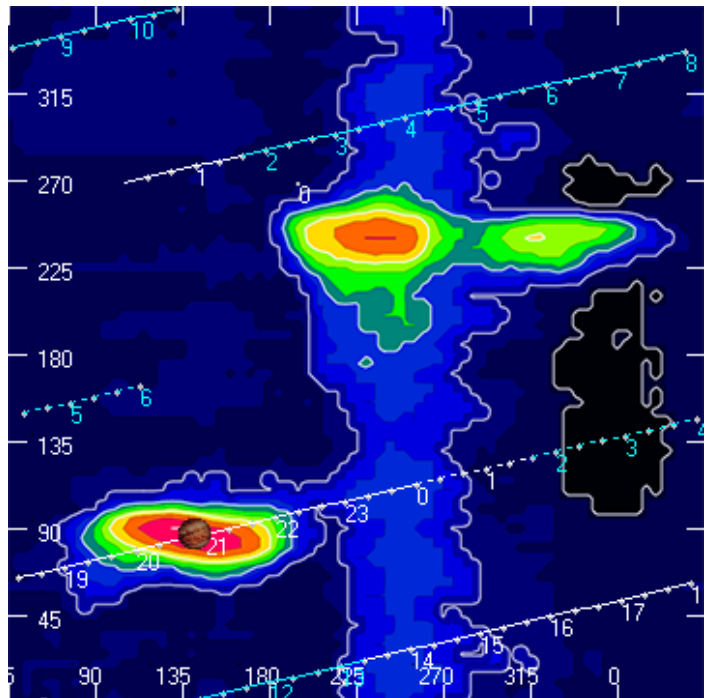
Jupiter was  $-6^\circ$  to  $+40^\circ$  off axis.

Jupiter was trailing the Sun by  $33^\circ$ .

Jupiter’s location at midpoint of observed emission (2052 UTC)

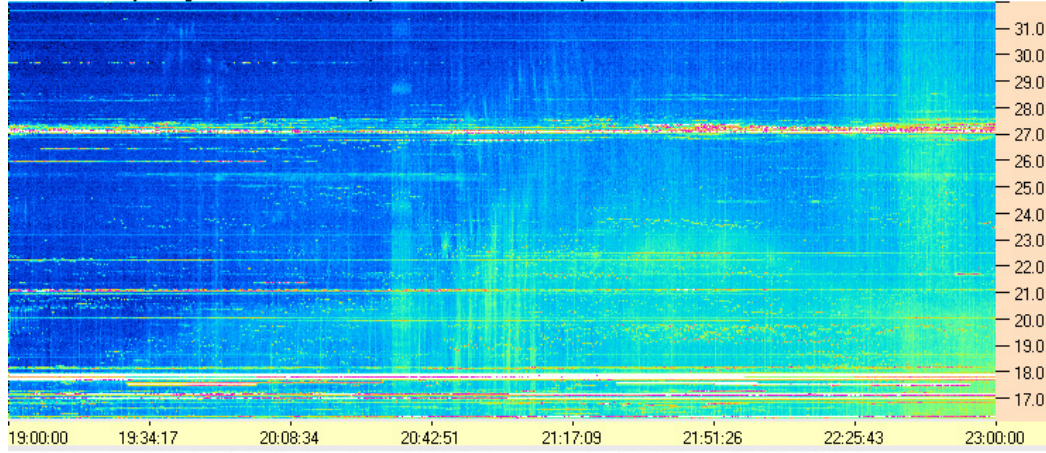


Sky map with array HPBW in green.

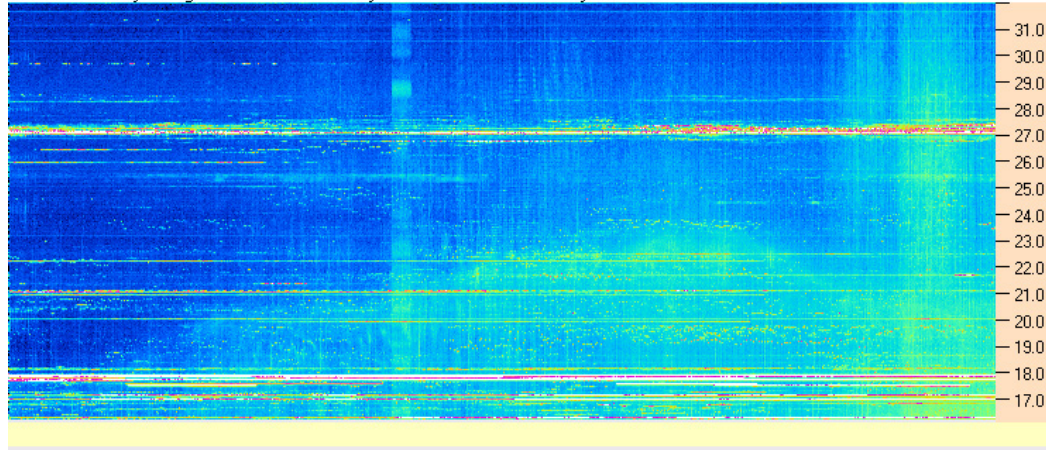


CML-Io phase plane.

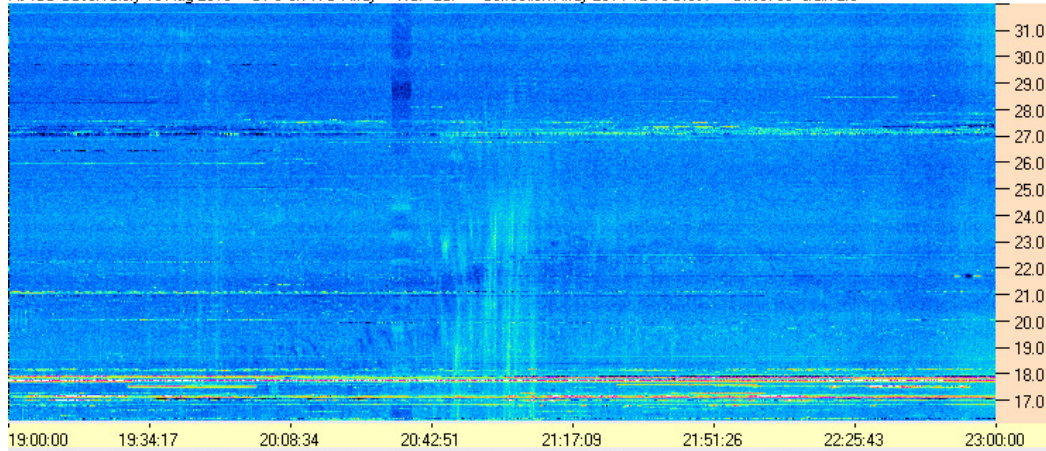
AJ4CO Observatory 13 Aug 2016 - DPS on TFD Array - RCP-LCP - Correction Array 2014 12 18 B.csv - Offset 50 Gain 2.0



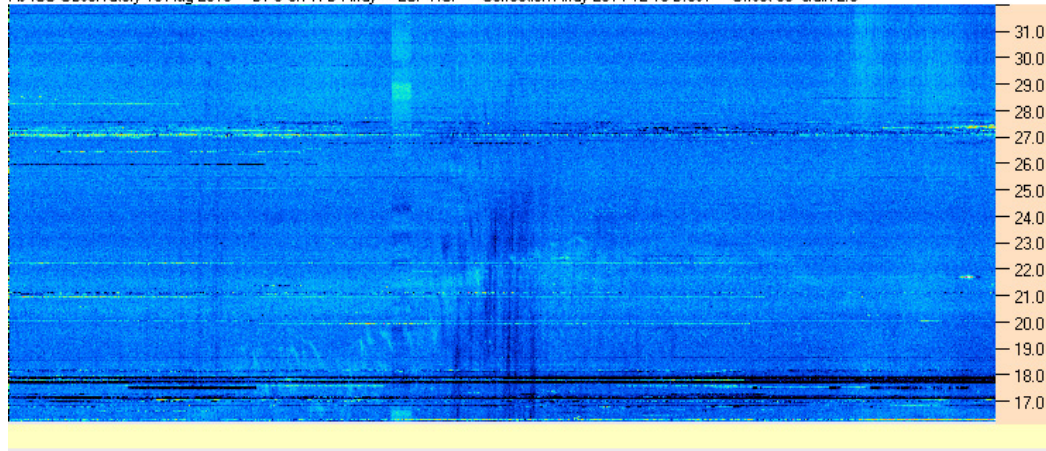
AJ4CO Observatory 13 Aug 2016 - DPS on TFD Array - LCP-RCP - Correction Array 2014 12 18 B.csv - Offset 50 Gain 2.0



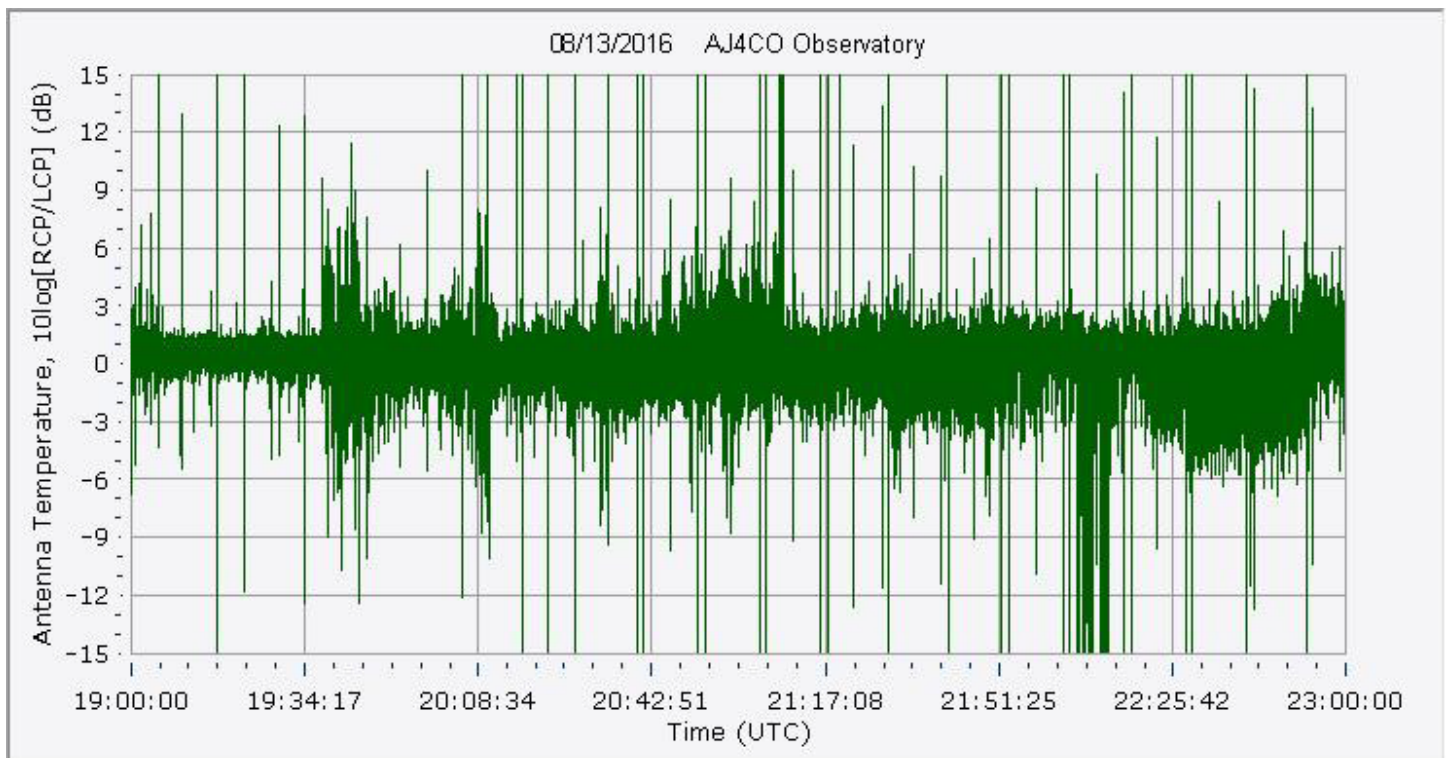
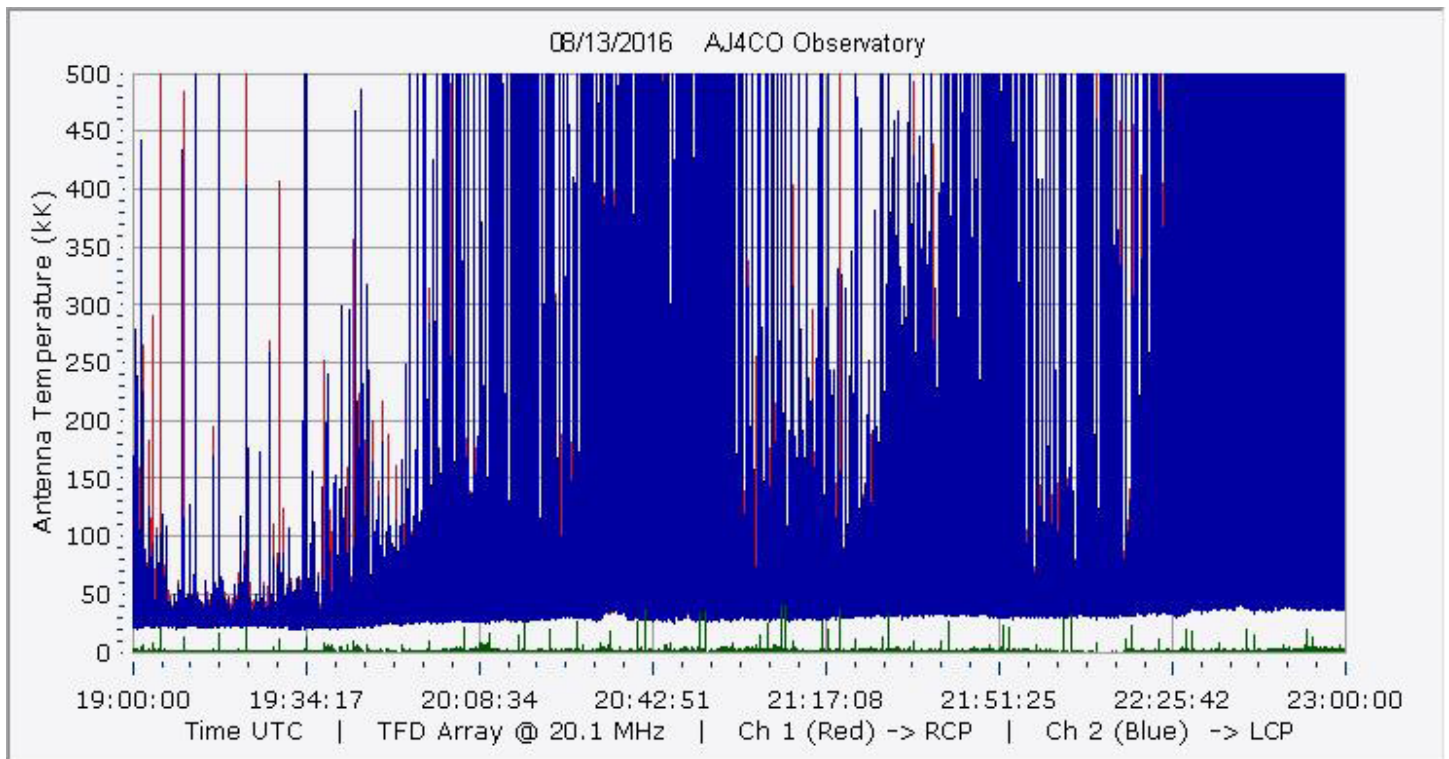
AJ4CO Observatory 13 Aug 2016 - DPS on TFD Array - RCP-LCP - Correction Array 2014 12 18 B.csv - Offset 50 Gain 2.0



AJ4CO Observatory 13 Aug 2016 - DPS on TFD Array - LCP-RCP - Correction Array 2014 12 18 B.csv - Offset 50 Gain 2.0

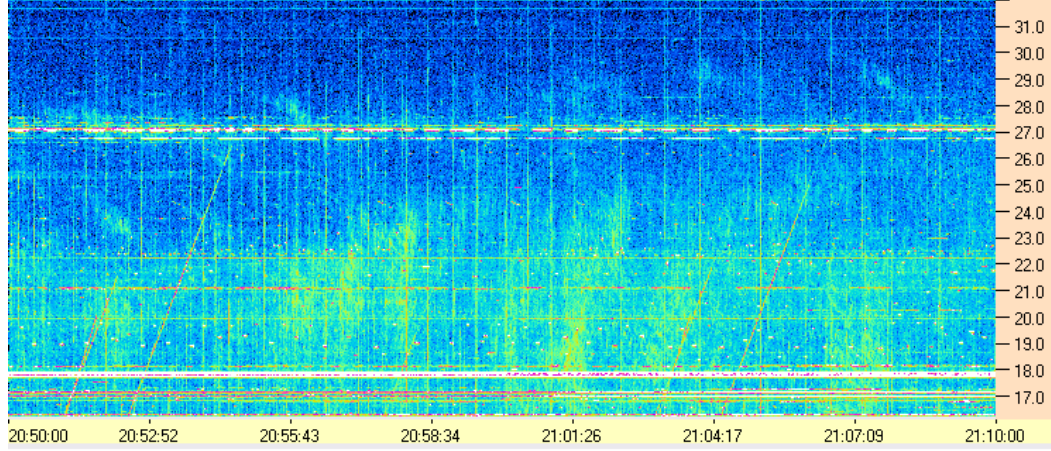




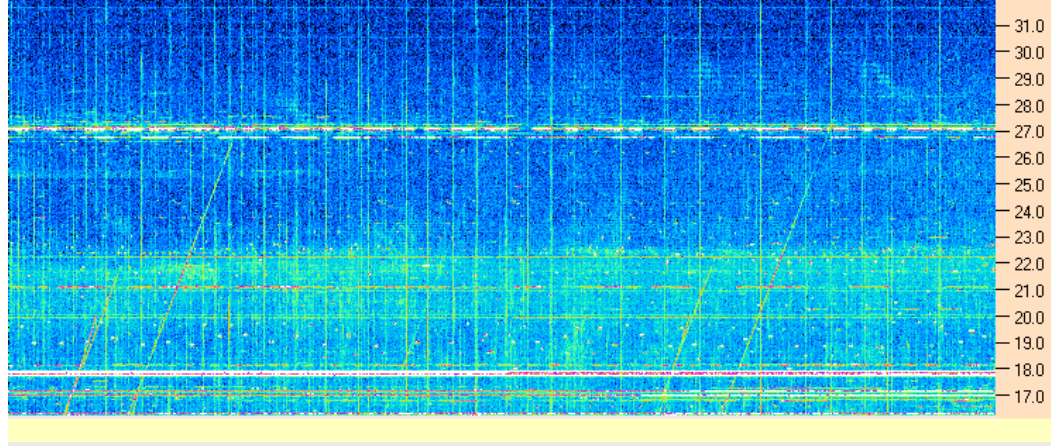




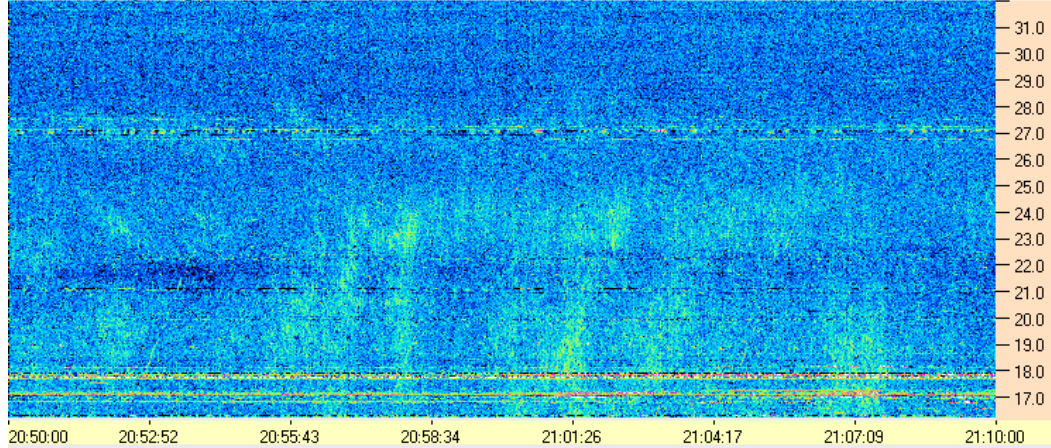
AJ4CO Observatory 13 Aug 2016 - DPS on TFD Array - RCP-LCP - Correction Array 2014 12 18 B.csv - Offset 50 Gain 2.0



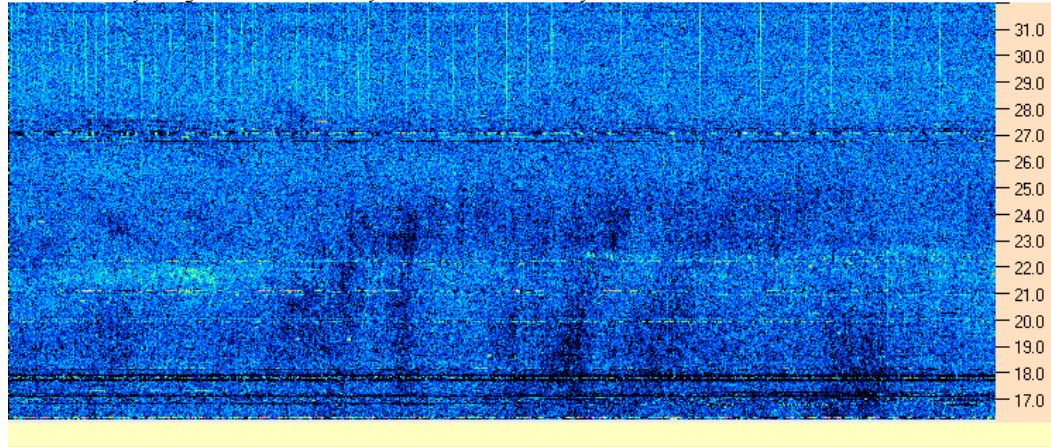
AJ4CO Observatory 13 Aug 2016 - DPS on TFD Array - LCP-RCP - Correction Array 2014 12 18 B.csv - Offset 50 Gain 2.0



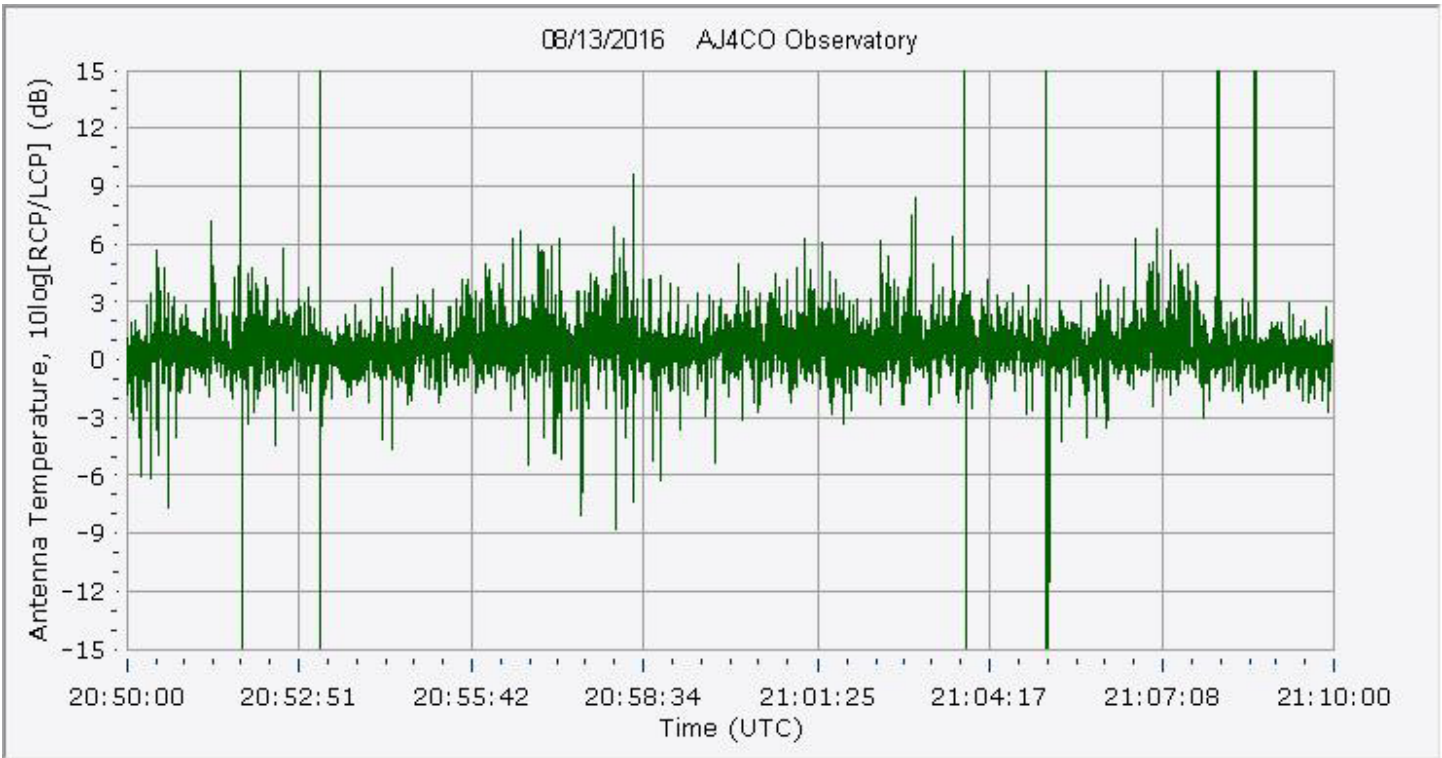
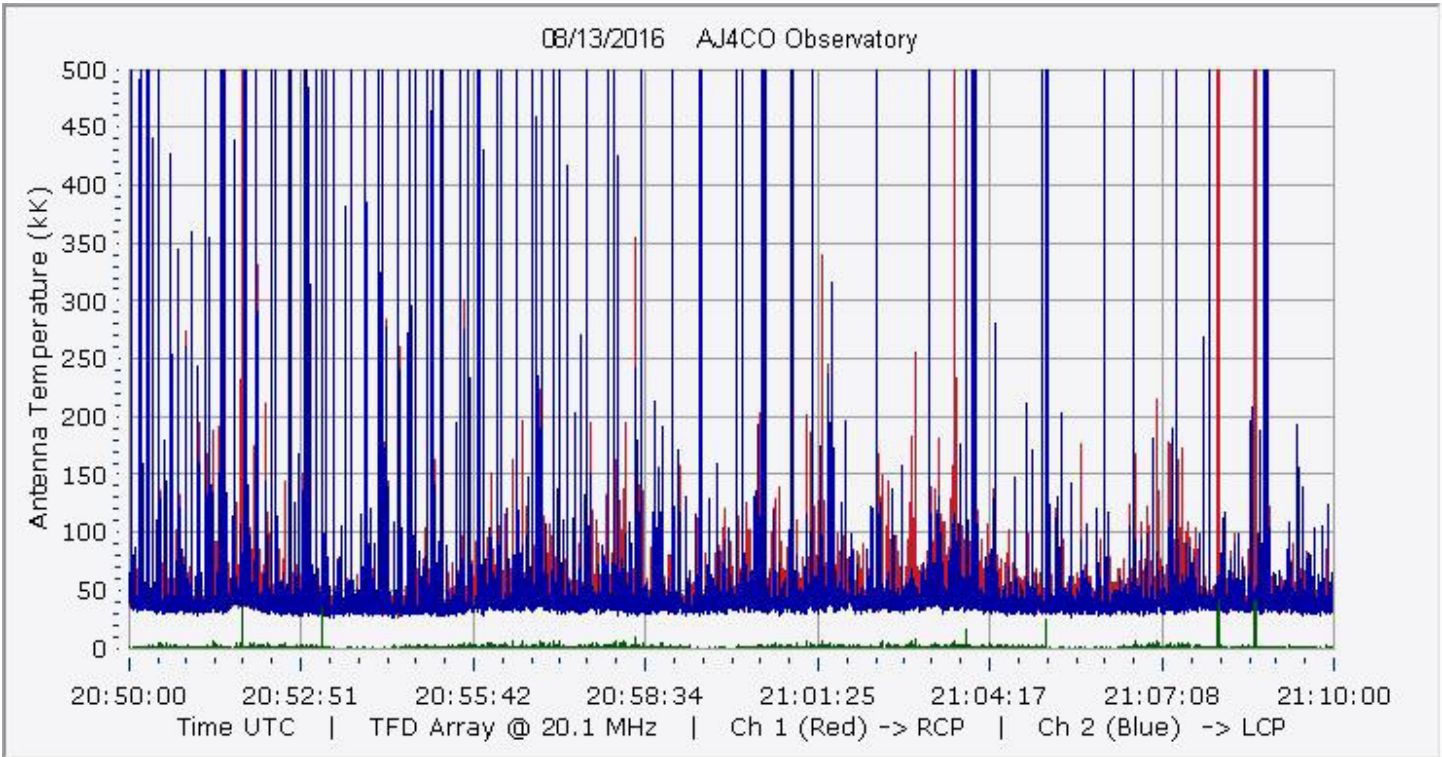
AJ4CO Observatory 13 Aug 2016 - DPS on TFD Array - RCP-LCP - Correction Array 2014 12 18 B.csv - Offset 50 Gain 2.0



AJ4CO Observatory 13 Aug 2016 - DPS on TFD Array - LCP-RCP - Correction Array 2014 12 18 B.csv - Offset 50 Gain 2.0

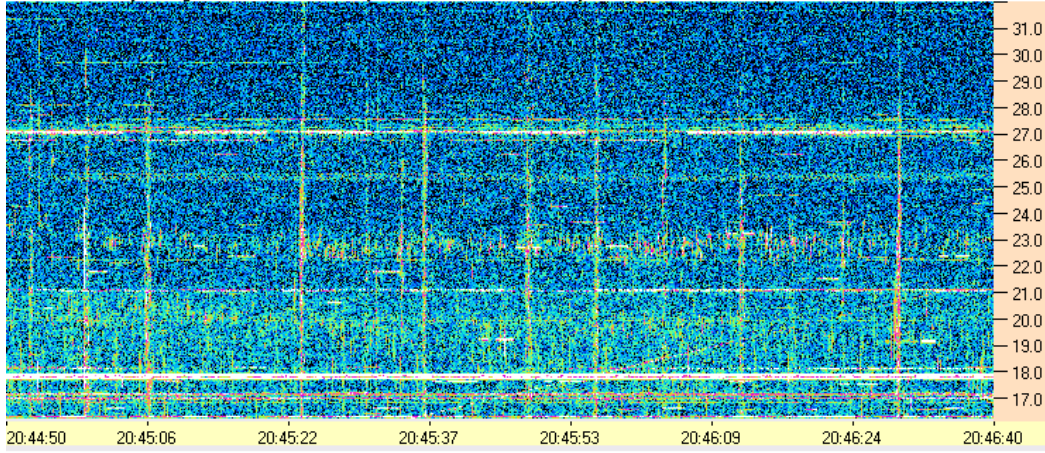




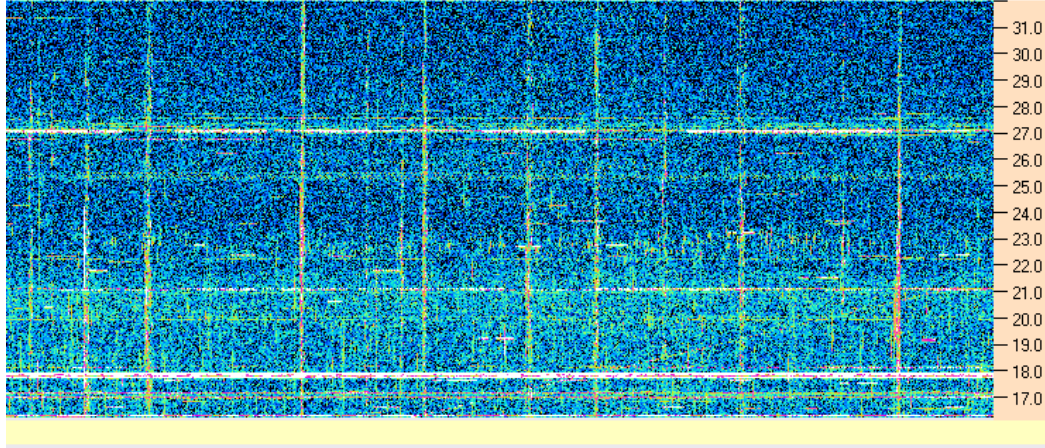




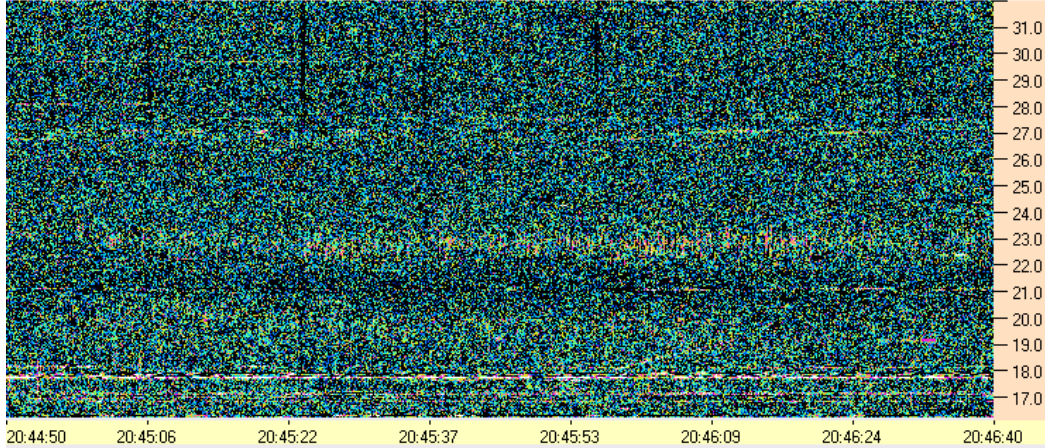
AJ4CO Observatory 13 Aug 2016 - DPS on TFD Array - RCP-LCP - Correction Array 2014 12 18 B.csv - Offset 50 Gain 2.0



AJ4CO Observatory 13 Aug 2016 - DPS on TFD Array - LCP-RCP - Correction Array 2014 12 18 B.csv - Offset 50 Gain 2.0



AJ4CO Observatory 13 Aug 2016 - DPS on TFD Array - RCP-LCP - Correction Array 2014 12 18 B.csv - Offset 50 Gain 2.0



AJ4CO Observatory 13 Aug 2016 - DPS on TFD Array - LCP-RCP - Correction Array 2014 12 18 B.csv - Offset 50 Gain 2.0

