

**Subject:** [radiojove-data] 05 Jul 2016 Io-B/D

**From:** Dave Typinski <davetyp@typnet.net>

**Date:** 07/09/2016 15:27

**To:** RadioJove-Data <radiojove-data@lists.nasa.gov>

Adding to Tom & Jim & Nathan & Wes's nice reports, here's some Io-B and Io-D from 7/5.

RCP dominant L bursting 2139-2339 UTC from 16 to 32 MHz, positive emission envelope drift. (Io-B)

LCP dominant narrow band S burst trains 2322-2357 UTC from 16 to 20 MHz, positive emission envelope drift. (Io-D)

Jupiter was  $-3^\circ$  to  $+31^\circ$  off axis.

Jupiter was trailing the Sun by  $63^\circ$ .

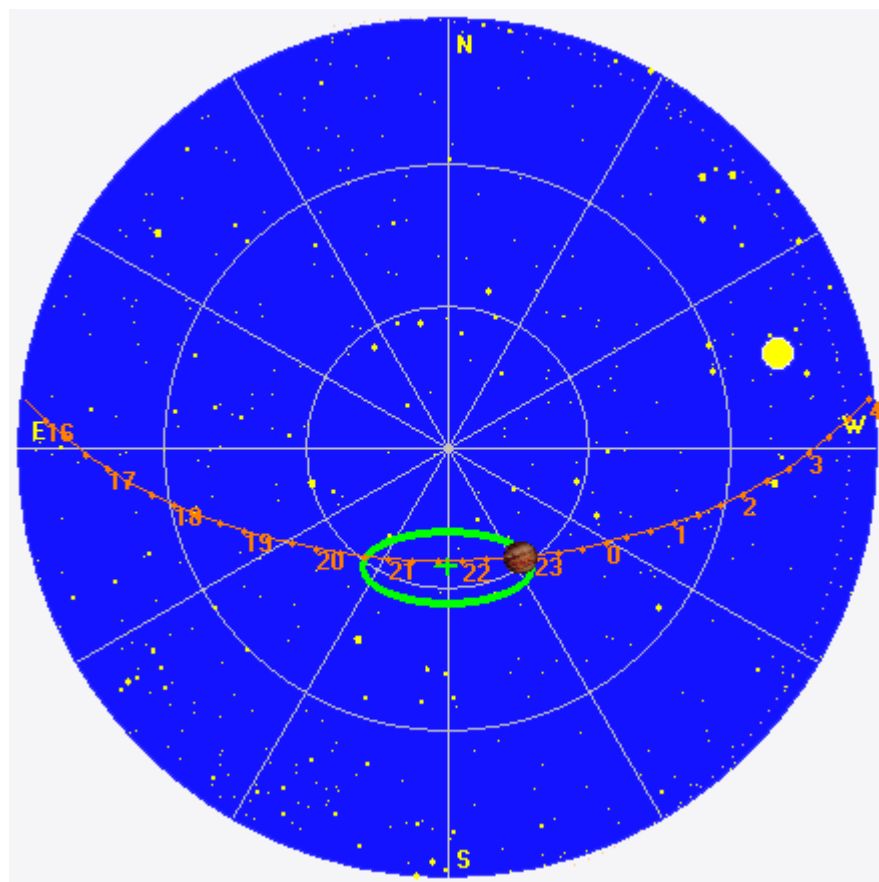
--

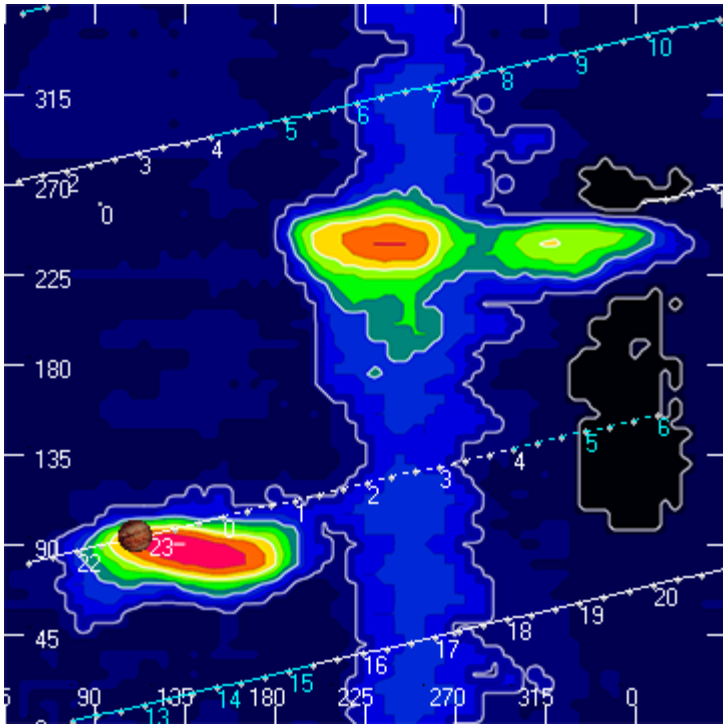
Dave

---

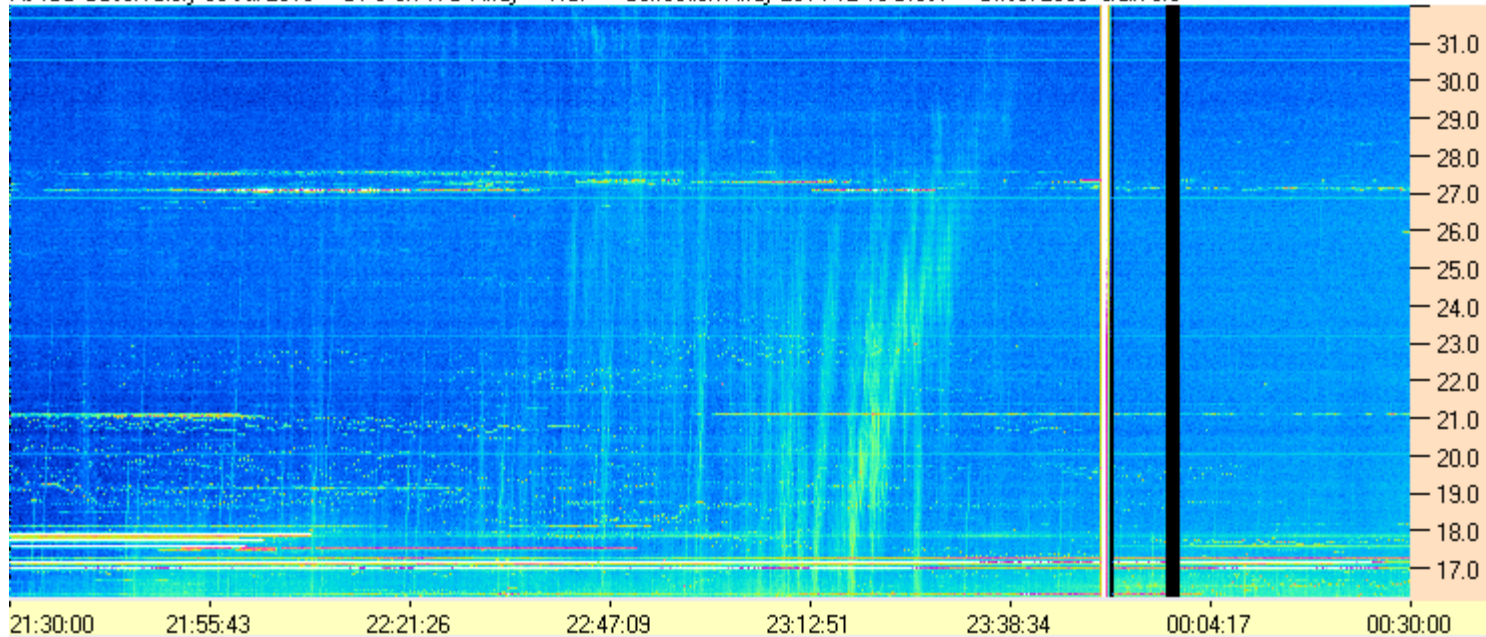
**AJ4CO Observatory 05 Jul 2016, log entry 733-734**

---

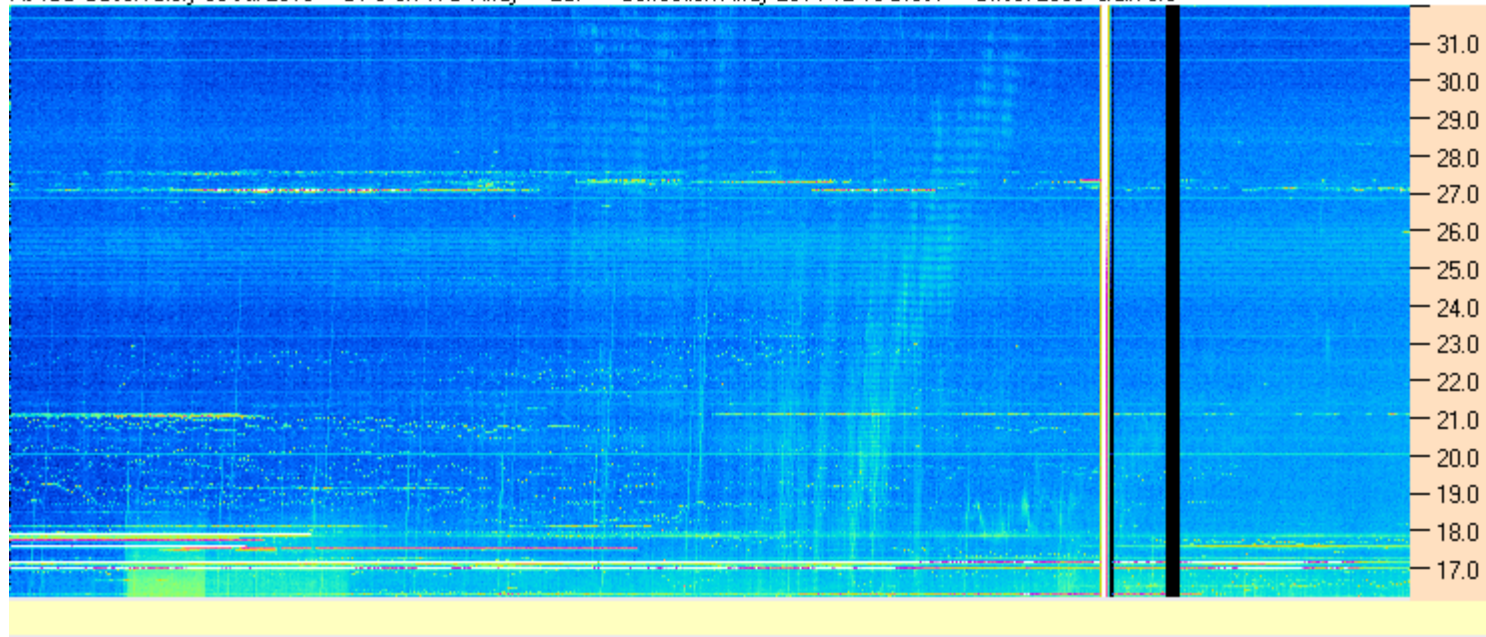




AJ4CO Observatory 05 Jul 2016 - DPS on TFD Array - RCP - Correction Array 2014 12 18 B.csv - Offset 2050 Gain 5.0

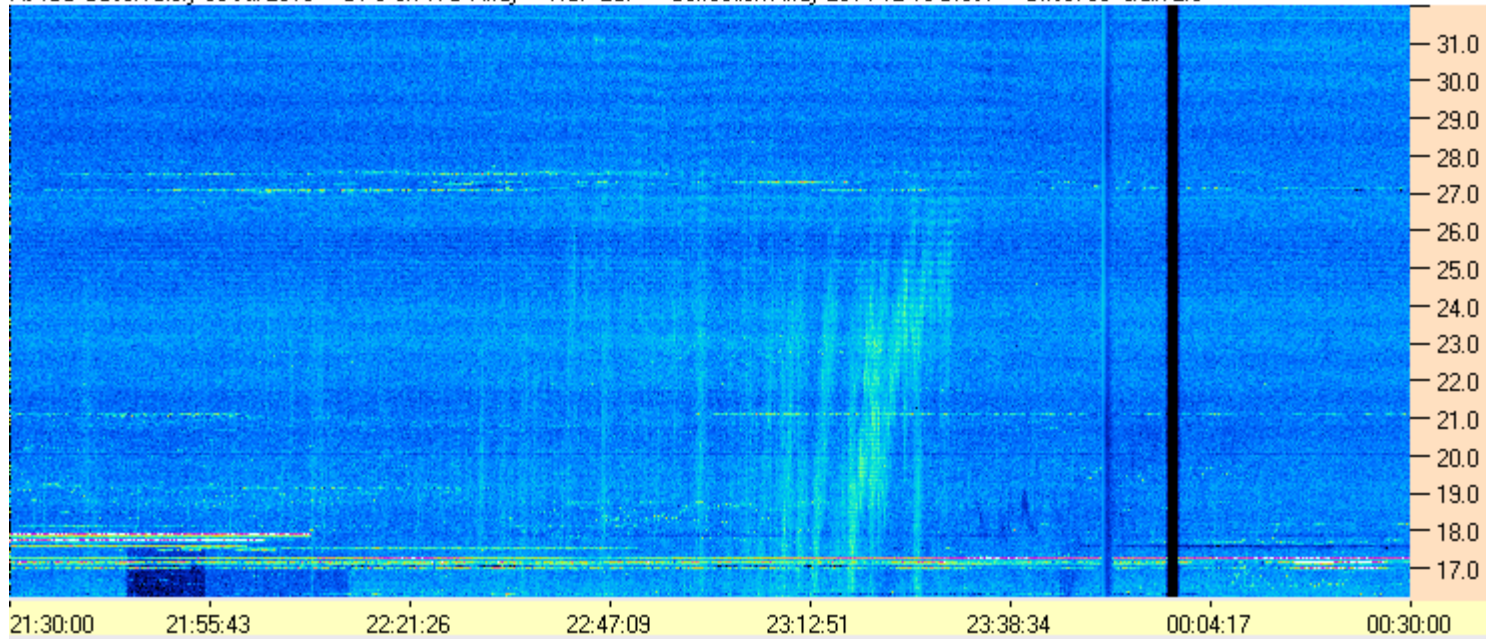


AJ4CO Observatory 05 Jul 2016 - DPS on TFD Array - LCP - Correction Array 2014 12 18 B.csv - Offset 2050 Gain 5.0





AJ4CO Observatory 05 Jul 2016 - DPS on TFD Array - RCP-LCP - Correction Array 2014 12 18 B.csv - Offset 50 Gain 2.0



AJ4CO Observatory 05 Jul 2016 - DPS on TFD Array - RCP-LCP - Correction Array 2014 12 18 B.csv - Offset 50 Gain 2.0

