

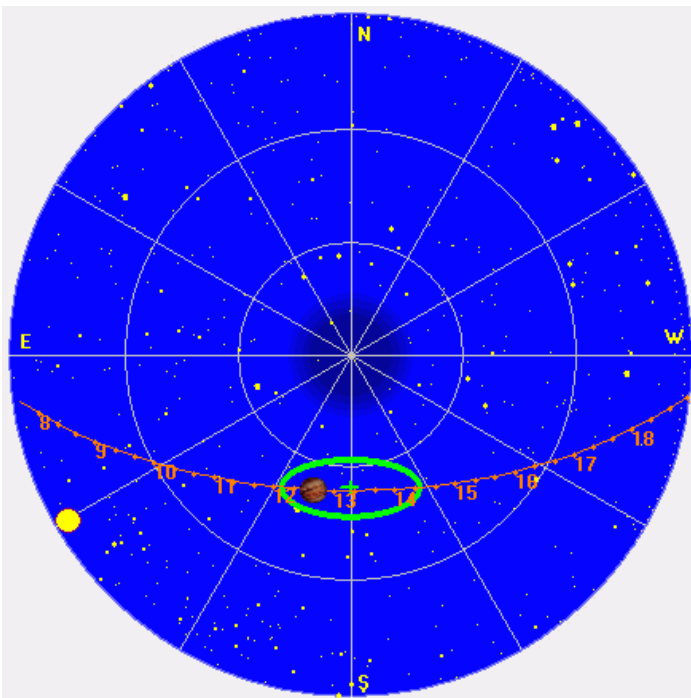
Some brief, weak non-Io-A.

RCP dominant L bursting 1227–1253 UTC from 16 to 23 MHz, negative frequency drift emission envelopes.

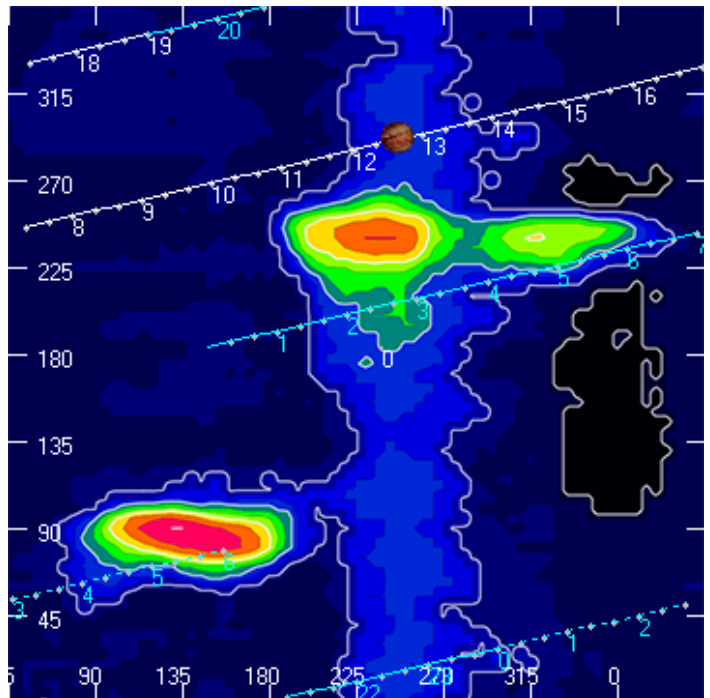
Jupiter was -17° to -13° off axis.

Jupiter was leading the Sun by 61° .

Jupiter's location at midpoint of observed emission (1240 UTC)

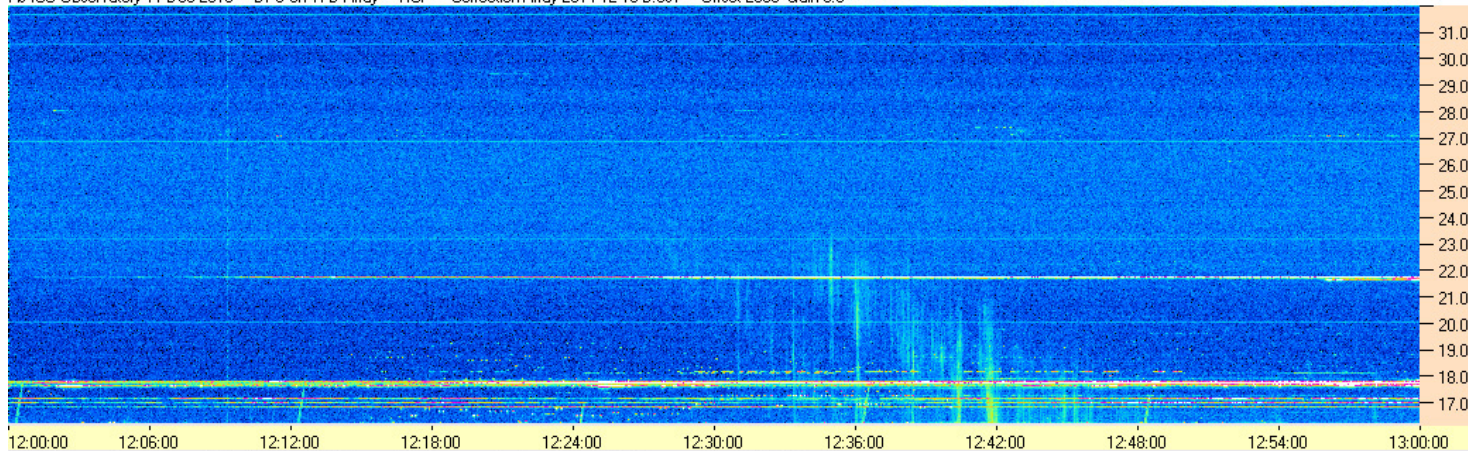


Sky map with array HPBW in green.

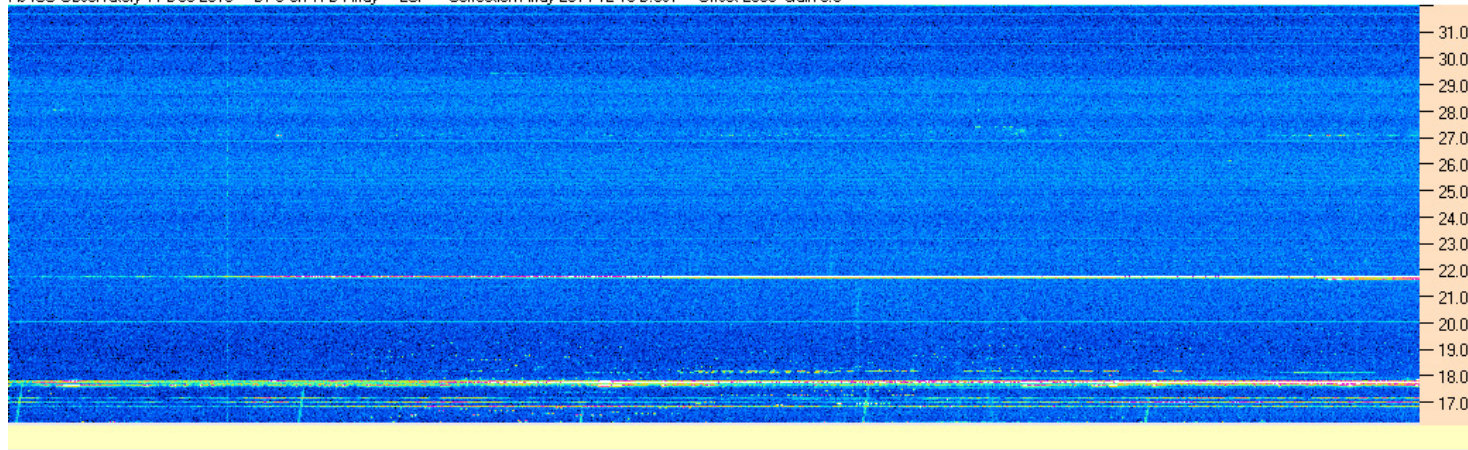


CML-Io phase plane.

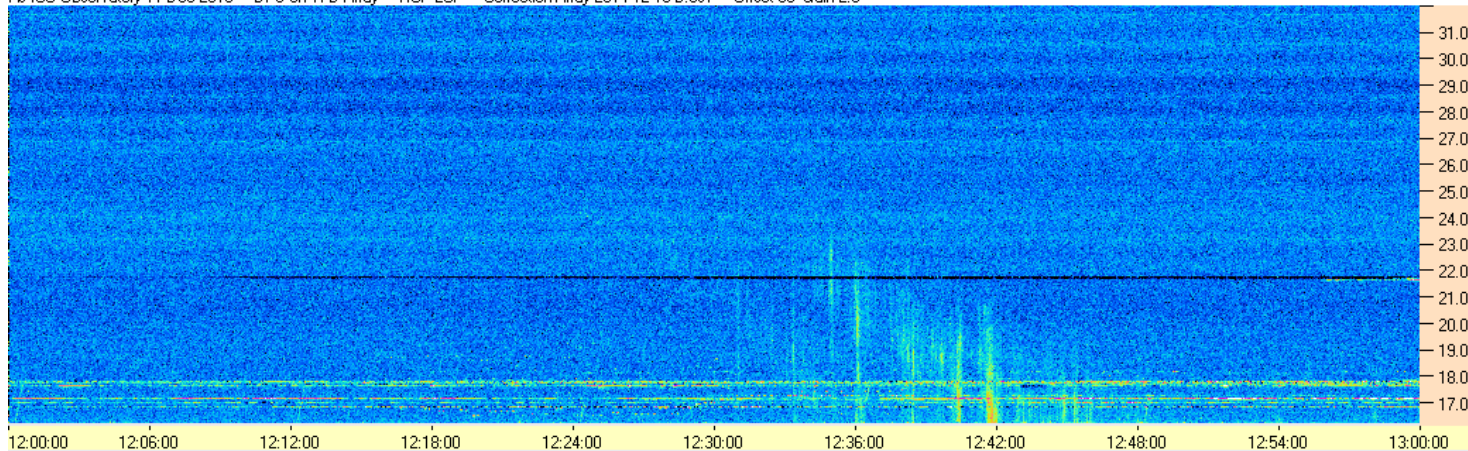
AJ4CO Observatory 11 Dec 2016 - DPS on TFD Array - RCP - Correction Array 2014 12 18 B.csv - Offset 2050 Gain 5.0



AJ4CO Observatory 11 Dec 2016 - DPS on TFD Array - LCP - Correction Array 2014 12 18 B.csv - Offset 2050 Gain 5.0



AJ4CO Observatory 11 Dec 2016 - DPS on TFD Array - RCP-LCP - Correction Array 2014 12 18 B.csv - Offset 50 Gain 2.0



AJ4CO Observatory 11 Dec 2016 - DPS on TFD Array - LCP-RCP - Correction Array 2014 12 18 B.csv - Offset 50 Gain 2.0

