

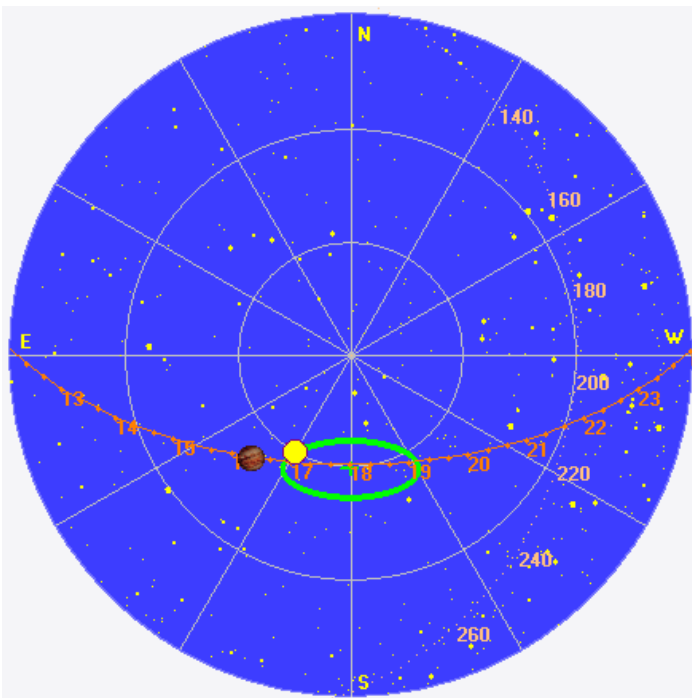
Some Io-C N events from Tuesday.

LCP dominant N events 1553–1654 UTC from 16 to 20 MHz, negative frequency drift emission envelopes.

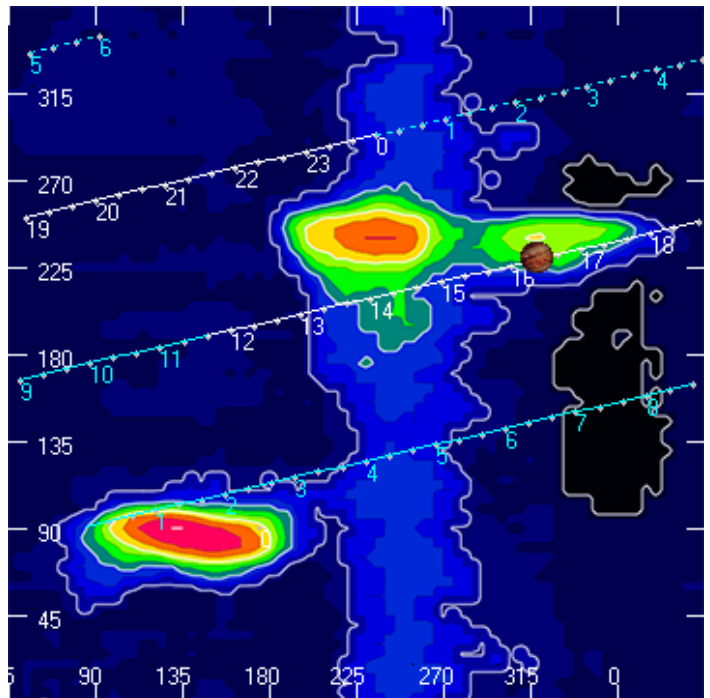
Jupiter was -33° to -17° off axis.

Jupiter was trailing the Sun by 10° .

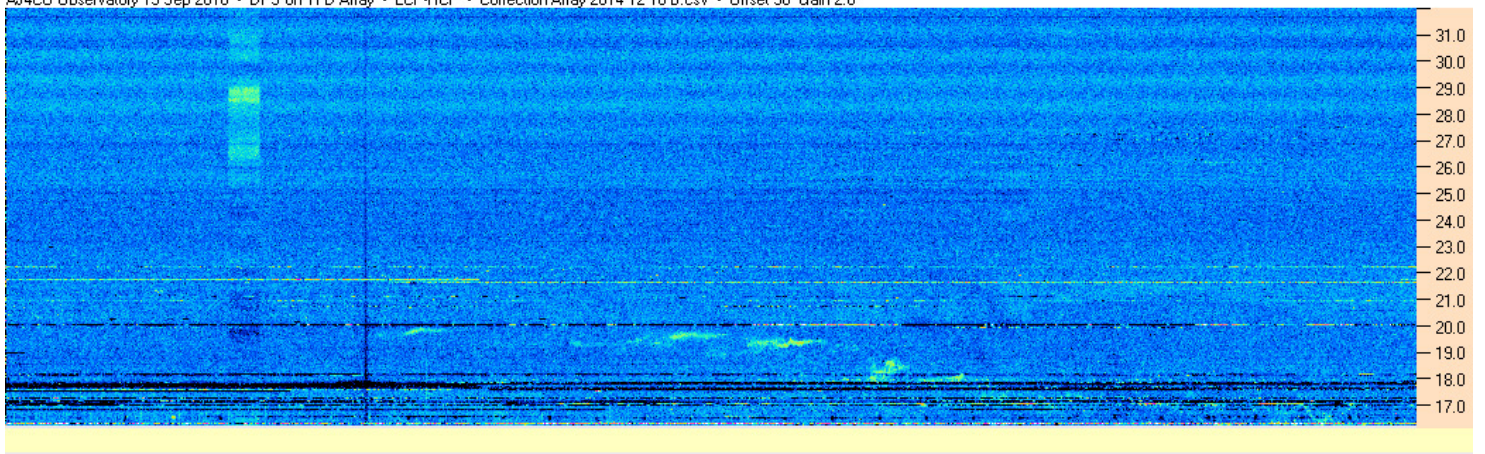
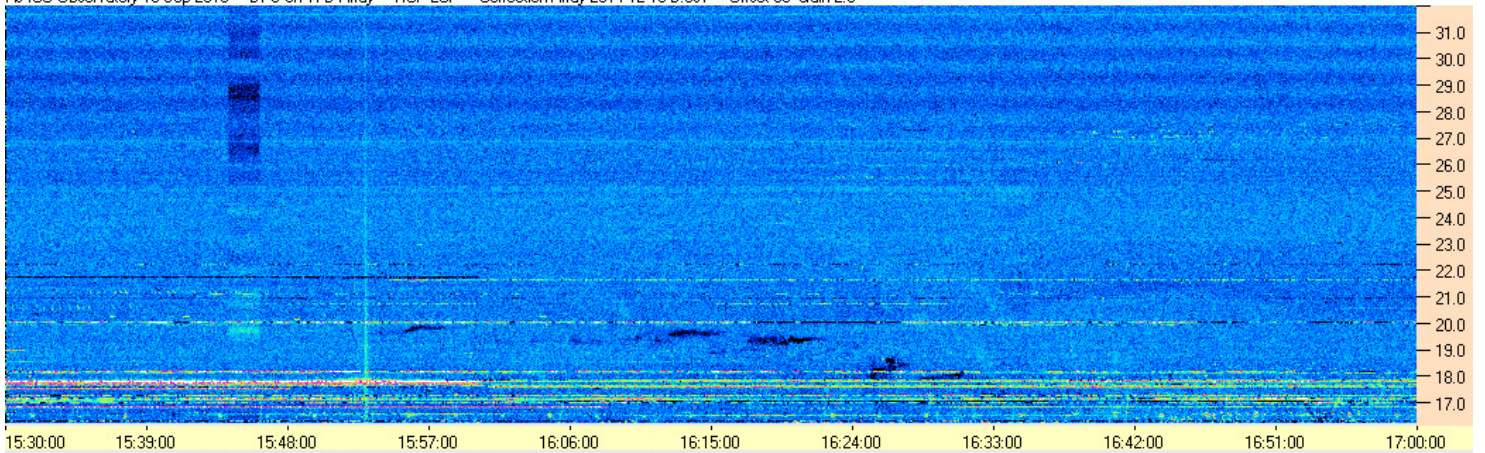
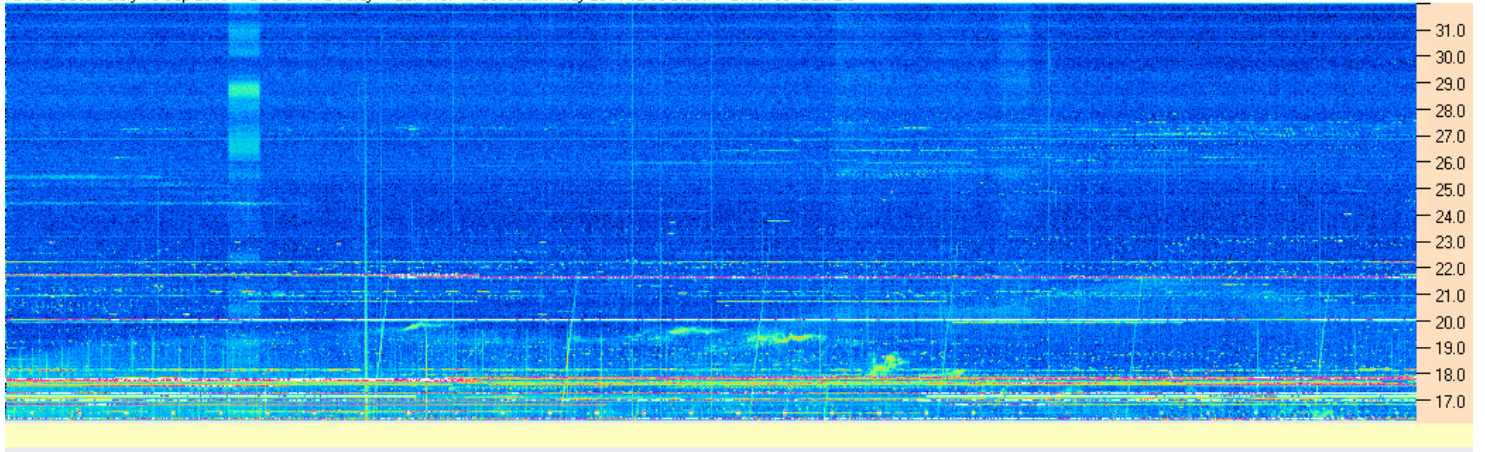
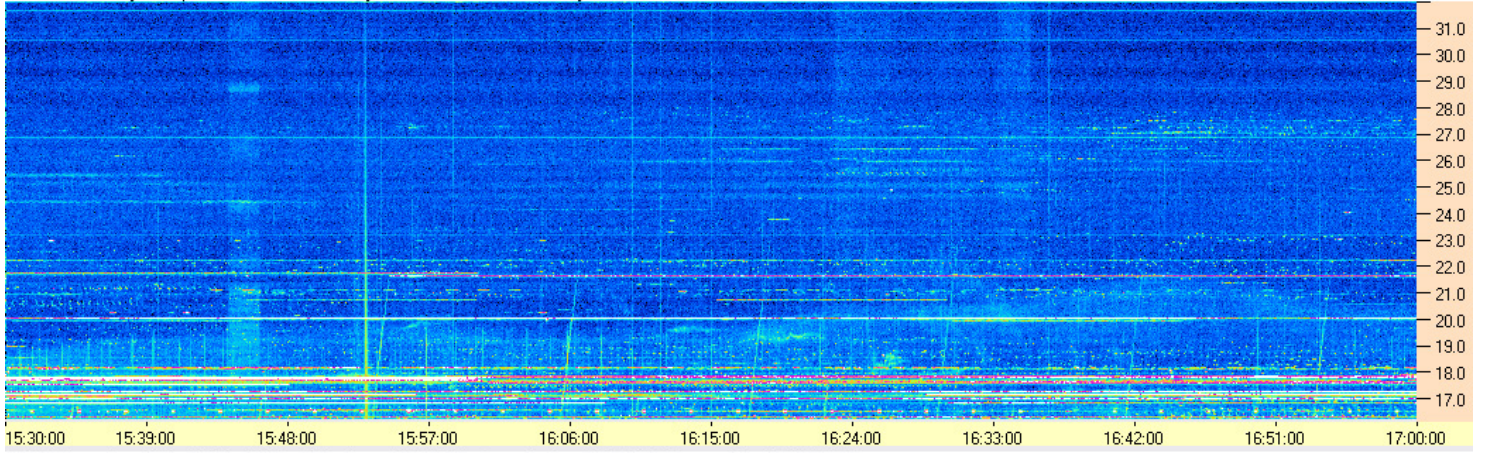
Jupiter's location at midpoint of observed emission (1623 UTC)



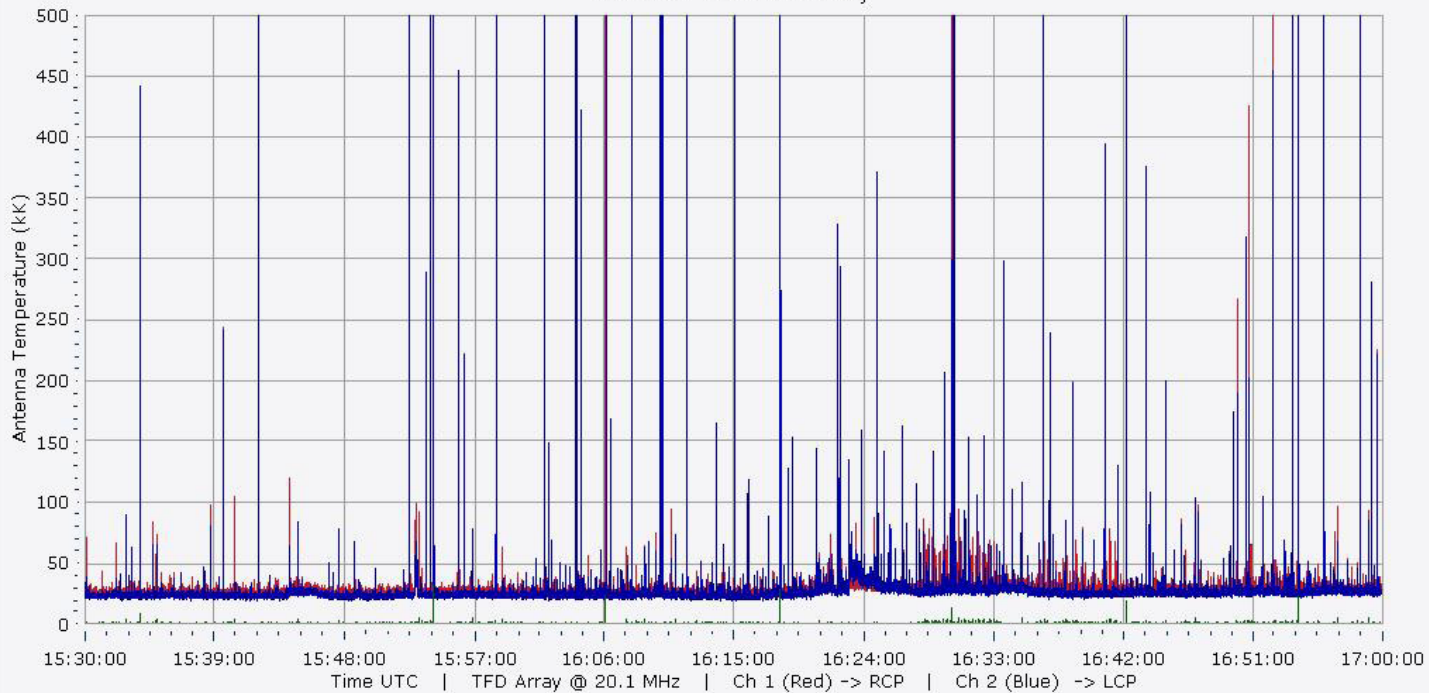
Sky map with array HPBW in green.



CML-Io phase plane.



09/13/2016 AJ4CO Observatory



09/13/2016 AJ4CO Observatory

