

Subject: [radiojove-data] 08 Jul 2016 non-Io-A

From: Dave Typinski <davetyp@typnet.net>

Date: 07/10/2016 12:30

To: RadioJove-Data <radiojove-data@lists.nasa.gov>

Here's some brief, weak non-Io-A from 7/8.

RCP dominant L bursting 2318-2356 UTC from 16 to 21 MHz, negative emission envelope drift.

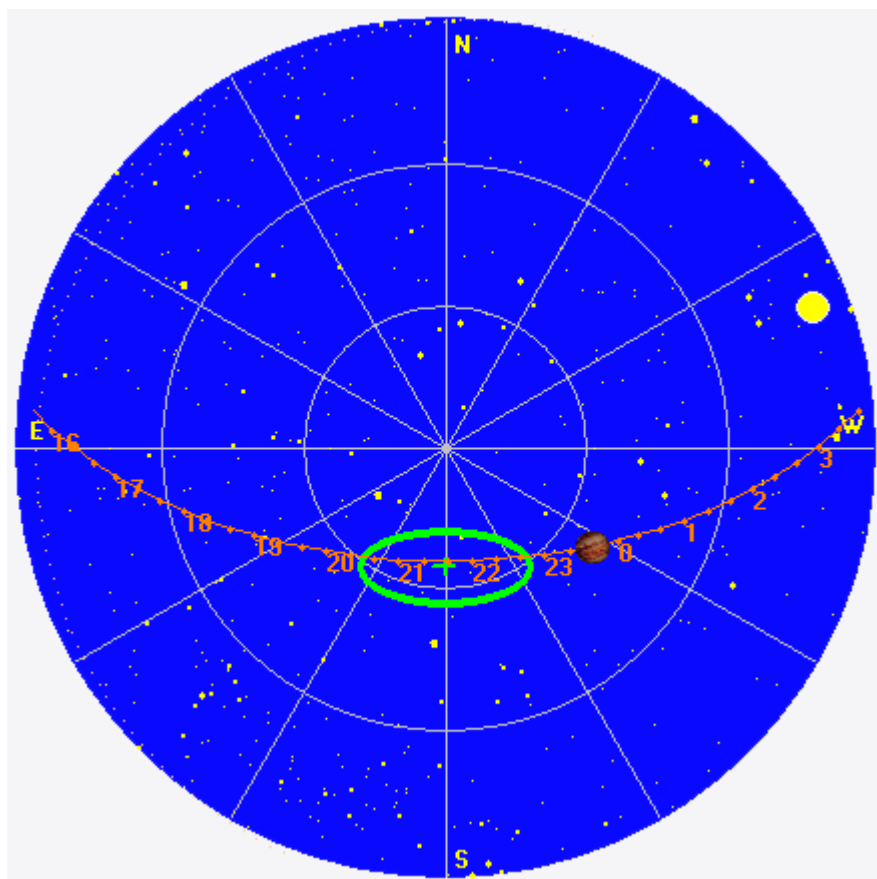
Jupiter was +24° to +34° off axis.

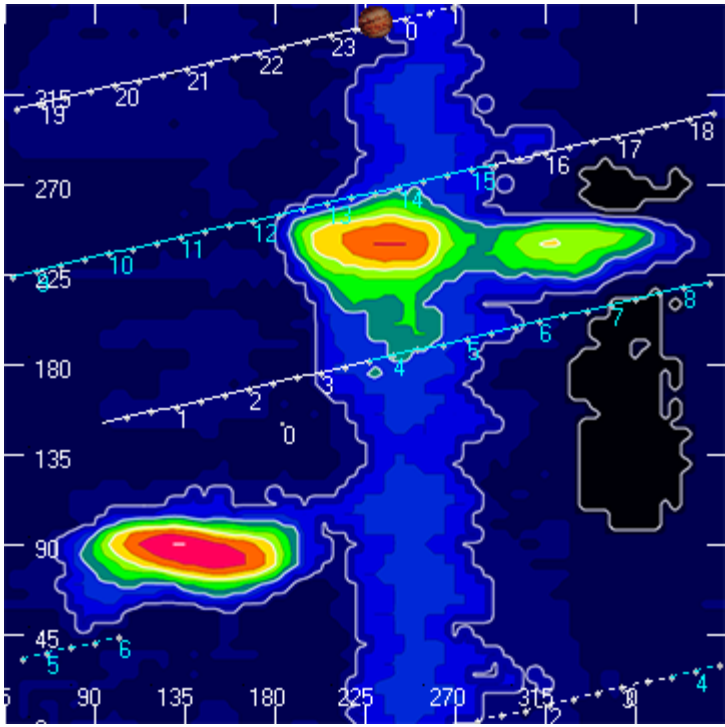
Jupiter was trailing the Sun by 61°.

--

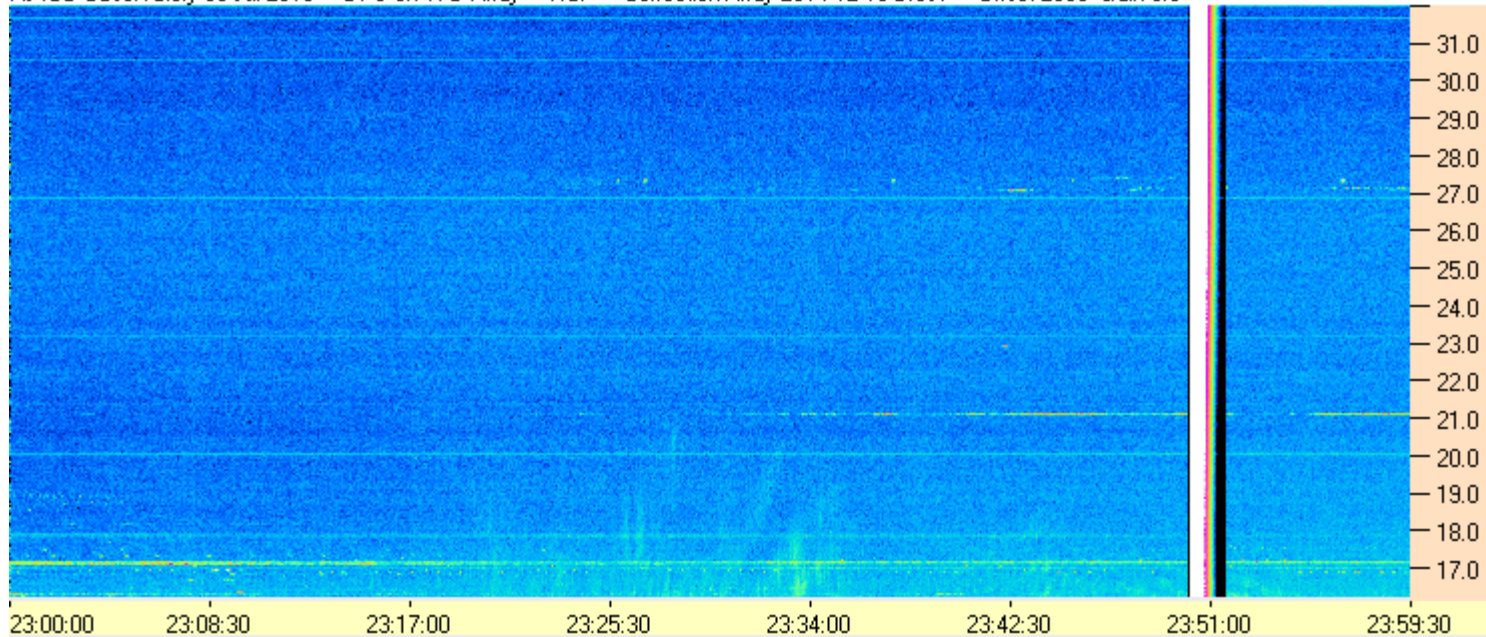
Dave

AJ4CO Observatory 08 Jul 2016, log entry 735

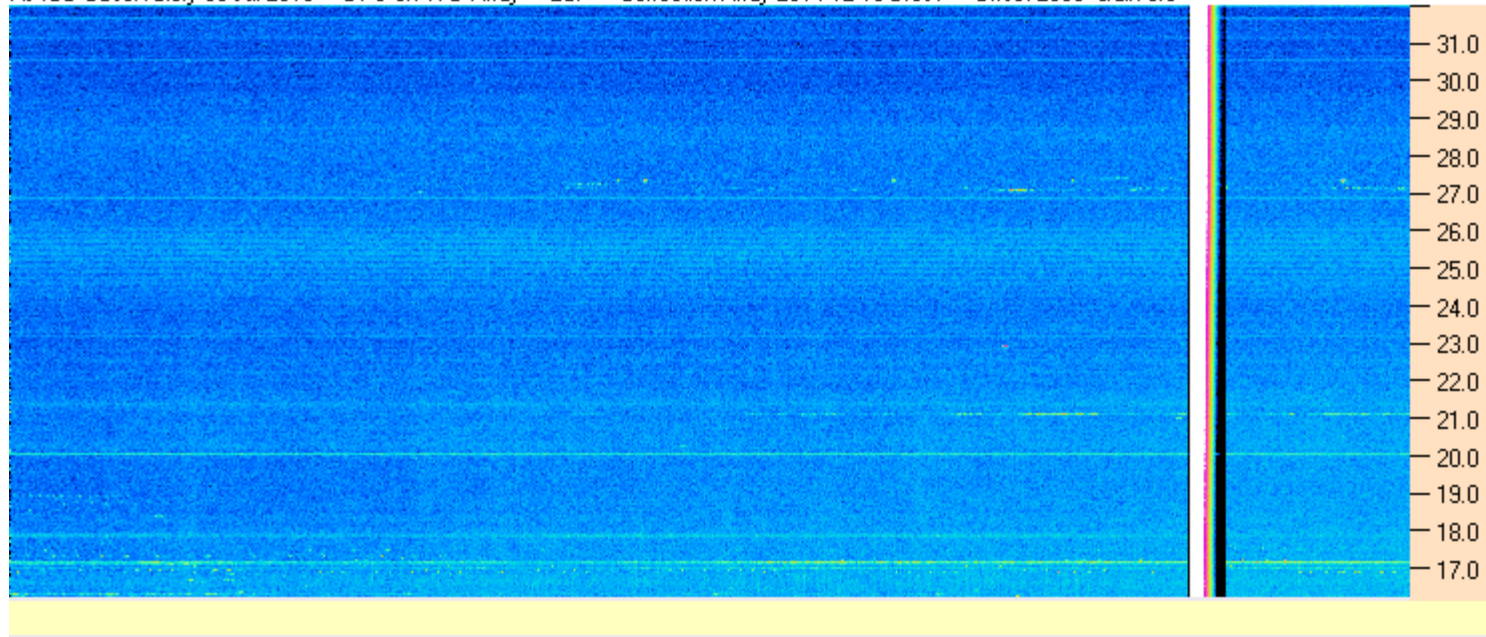




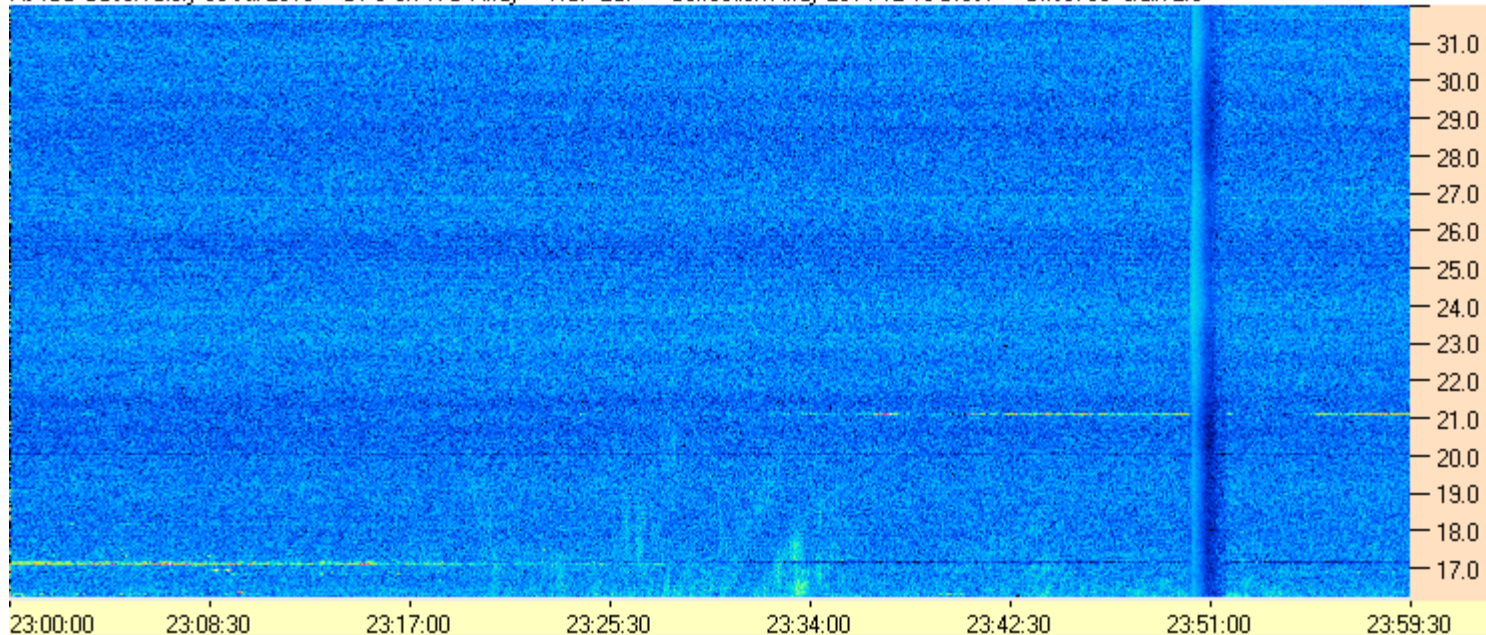
AJ4CO Observatory 08 Jul 2016 - DPS on TFD Array - RCP - Correction Array 2014 12 18 B.csv - Offset 2050 Gain 5.0



AJ4CO Observatory 08 Jul 2016 - DPS on TFD Array - LCP - Correction Array 2014 12 18 B.csv - Offset 2050 Gain 5.0



AJ4CO Observatory 08 Jul 2016 - DPS on TFD Array - RCP-LCP - Correction Array 2014 12 18 B.csv - Offset 50 Gain 2.0



AJ4CO Observatory 08 Jul 2016 - DPS on TFD Array - LCP-RCP - Correction Array 2014 12 18 B.csv - Offset 50 Gain 2.0

